

w1neo



Sustainable never
looked so good.

PURLINE®

BIO-BASED
POLYURETHANE
FLOORING



PURLINE®
Tough by design.
Clean by nature.

Silver Grey

Photo: © Markus Guhl

Content

PURLINE 1500 OVERVIEW	04
Performance-Driven	06
Sustainably-Focused	08
Design-Centered	10
Operating Costs	12
Explore the Collection	14
PURLINE Plank + Tile	16
Wood L + XL Plank	18
Stone Tile	32
Graphic Tile	36
Textile Tile	38
PURLINE Sheet	40
Chip Sheet	42
Wood Sheet	50
PURLINE Fusion	54
Product Composition	60
Purfix Accessories	60
Purfix Adhesives	61
Certifications	62
Technical Characteristics	64

PURLINE® 1500 OVERVIEW

+

+

+

+

+

+

+

+

+

Sustainably Strong. Beautifully Designed. Purposefully Made.

We believe flooring should do more than perform—it should make life better. That’s why we create smart, sustainable solutions that support both our customers and the planet.

With PURLINE, we’ve redefined resilient flooring using bio-based materials and eliminating harmful substances to promote healthier spaces. Our commitment to innovation, transparency, and responsible design drives us to build lasting value—for today and for future generations.

Performance-Driven

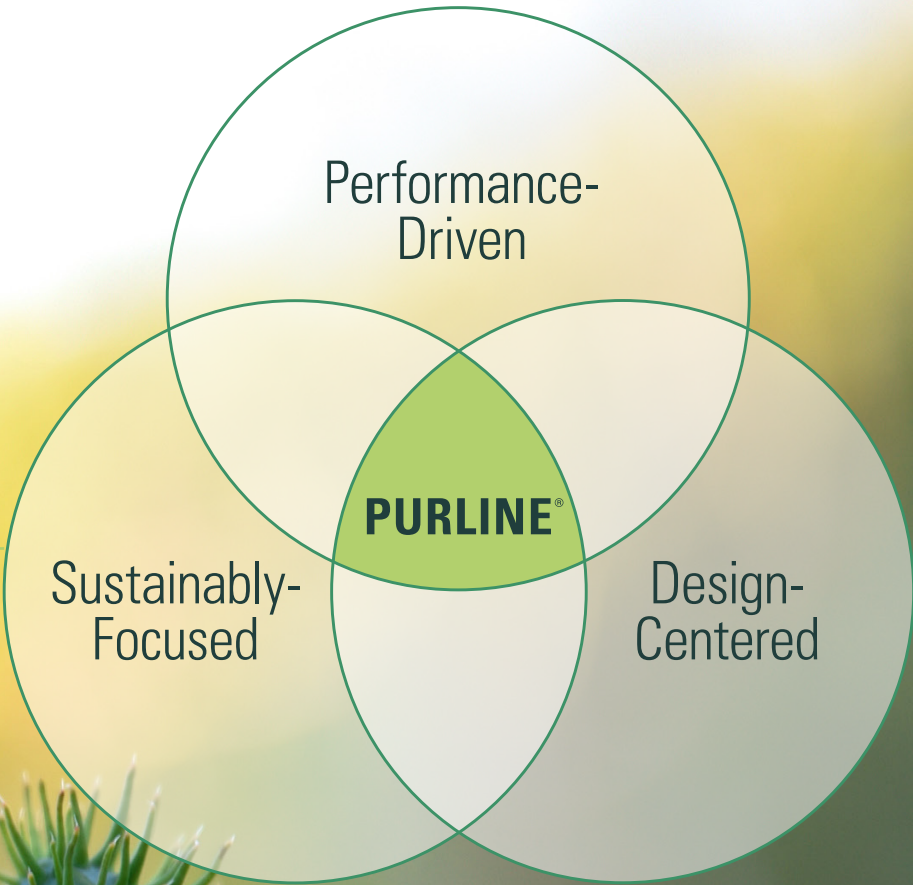
We’ve reimagined flooring to go beyond surface-level durability. By replacing petrochemicals with naturally sourced materials, PURLINE integrates lasting performance into the entire product, not just the surface. This approach minimizes maintenance while ensuring reliable, long-term resilience in even the most demanding spaces.

Sustainably-Focused

For us, sustainability means more than just eco-friendly materials—it’s about creating a lasting, positive impact. PURLINE uses bio-based polyurethane, eliminating harmful chemicals such as PVC, plasticizers, solvents, and chlorine, replacing them with natural ingredients - like castor oil and chalk. With this commitment, we ensure our products contribute positively to both indoor environments and the planet's future.

Design-Centered

Design and innovation are the driving forces behind our business. Thoughtful design enhances the user experience, builds brand loyalty, and fosters trust and credibility. Our approach combines decades of industry expertise with a design-centric perspective, where principles of color, contrast, and pattern are meticulously applied to create flooring visuals that are as functional as they are compelling.



++ ++ ++ ++ ++ Performance-Driven ++ ++

Engineered for Heavy Loads

Withstands ≈0.10 mm residual indentation (EN ISO 24343-1) and holds a Class 43 rating, so beds and equipment can easily glide without gouging.

Built to Last

Engineered for durability with superior resistance to scratches, indentations, and wear.

Easy Care

Simple, chemical-free cleaning and streamlined maintenance.

UV & Stain Resistant

Exceptional protection against fading from sunlight and staining from bleach, hand sanitizer, and other harsh agents.

Comfortable & Quiet

Elastic surface and bio-based polyurethane base layer softens steps, supports joint comfort, and reduces sound transmission.

Non-Toxic

Very low smoke and fire development properties and free from hazardous substances or emissions.

Dimensionally Stable

Remains stable under temperature changes; plasticizer-free construction eliminates the need for seam treatments (unless dictated by space function).

Purposeful Design for Safety & Clarity

Low-contrast designs and a matte surface finish support visual clarity, enhancing both safety and comfort in the built environment.



Application Areas

Education
Health + Wellness
Hospitality + Retail
Life Science
Multifamily
Senior Living
Workplace

+++ Sustainably-Focused

Bio-Based Composition, PVC-free

Made from natural, renewable raw materials list castor oil and chalk. Free from PVC, phthalates, plasticizers, formaldehyde, chlorine, and solvents.

Cradle-to-Cradle® Silver Certified

Assessed for material health, circularity, clean air, and social fairness.

Verified Low Emissions

GREENGUARD Gold and FloorScore® certified and Red List Approved all confirm healthy indoor air contributions.

Renewable Energy and Carbon Management

100% climate-neutral energy used in production.

Entirely Odorless

Free from unpleasant odors during installation and use, helping create healthier, more comfortable spaces for working, healing, and learning.

Extended Service Life for Fewer Replacements

A durable, high-performance composition and chemical-free maintenance extend the floor's lifespan, minimizing frequency of replacements and reducing environmental impact.

Made with

ecuran

your flooring upgrade



Chalk

Castor Oil

GOOD TO KNOW!

The Cradle to Cradle® philosophy sets the standard for future sustainability. Unlike other environmental labels, this international certification is awarded based on a comprehensive sustainability assessment, considering the entire product life cycle and its global impact. Cradle to Cradle® certification also supports building certifications like LEED, BREEAM, DGNB, and WELL.

Find our
sustainability
report here:



+++ Design-Centered

Cohesive Palette

134 wood, stone, textile, and graphic visuals curated for commercial interiors.

Format Versatility

Identical patterns available in sheet, plank, and tile so each space gets the right format without visual compromise.

Large-Scale Repeat

Wood sheets feature up to 14.8 ft (4.5 m) repeats for natural continuity with no pattern matching.

Matte Surface Advantage

Enhances visual acuity with low-sheen surface finish, reduces glare-related safety risks, and masks subfloor imperfections for a clean, consistent appearance.

Seamless Integration

A broad palette of neutral tones seamlessly integrate new installations with existing environments for cohesive design continuity.

Warmth and Durability

Extensive wood designs combine warmth and durability, with subtle patterning that extends the floor's aesthetic life by gracefully masking wear, especially in heavy traffic environments.



+++ +++ +++ Operating Costs at a Glance

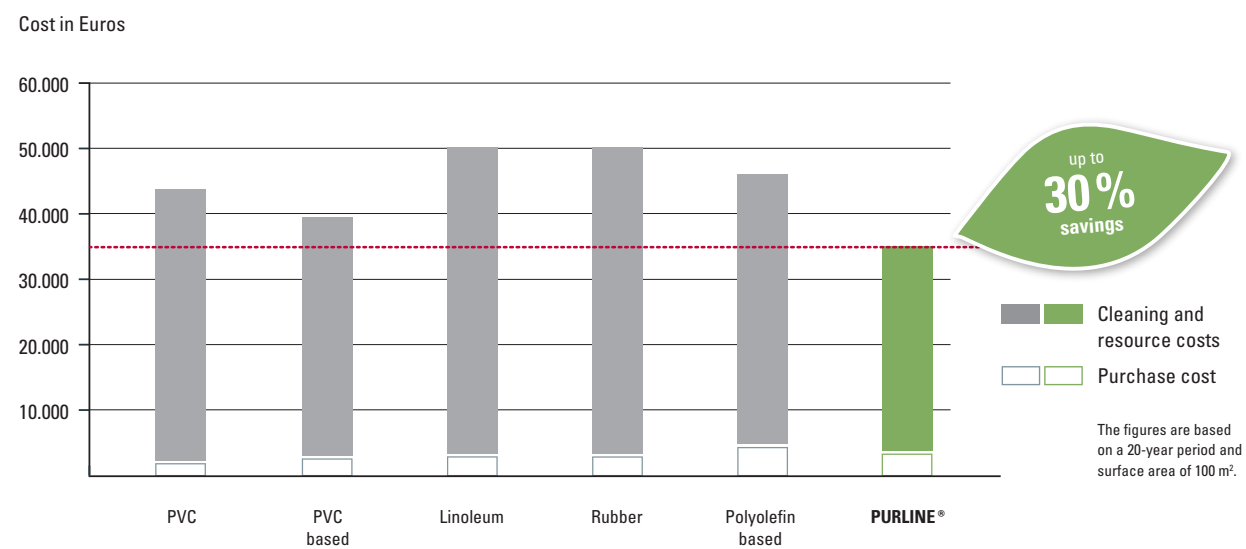
Durable and Easy to Clean

Conventional cleaners can be used without any problems:

- Additional waxing or coating are not necessary
- All surface disinfectants can be used
- Various tests prove effective disinfectability
- Contrast agents commonly used in hospitals do not discolor PURLINE floor coverings
- No marks left by furniture after a short regeneration period
- No visible wear due to mechanical stress
- Extremely high resistance to sunlight

Demonstrably Economical

The PFIFF Institute compared total purchase price and 20-year care costs for a 1,076 ft² (100m²) area. PURLINE delivered an average 30% saving verses standard resilient flooring.



Cost model verified by the PFIFF Institute - an independent German consultancy specializing in facility management and cleaning cost analysis.



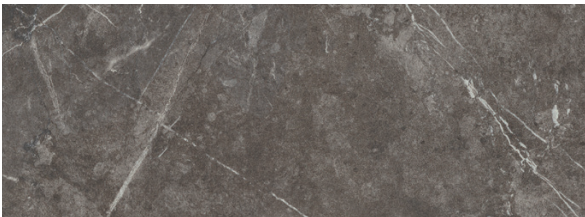


About the Designs



Chip

Available in 24 colors: Sheet
Non-directional, color-rich, and waste-reducing.
Seamlessly coordinates with the 1500 series for bold yet cohesive layouts.



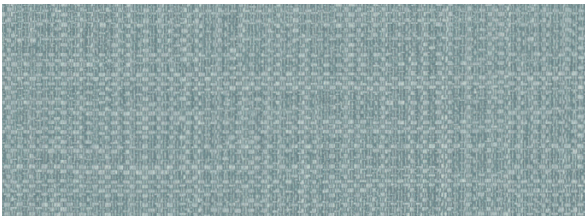
Stone

Available in 14 colors: XL Tiles
Natural aesthetics without the cold, noise, or slipperiness of real stone. Large-format options reduce seams; concrete looks without the cracking.



Graphic

Available in 6 Colors: XL Tiles
Organic, low-contrast visuals with layered depth—ideal as a subtle overall pattern or textured accent.



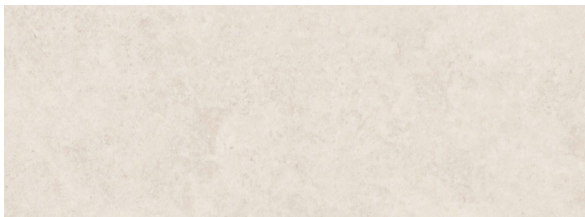
Textile

Available in 6 Colors: XL Tiles
Linen-inspired with a soft, refined aesthetic. Enhances visual clarity while supporting subtle accents, zoning, or wayfinding.



Wood

Available in 40 Colors: Sheet, L Plank, and XL Plank
Realistic and highly requested, this flexible wood collection features 12 crossover patterns available in both planks and rolls:
- Sheet: Meet hygiene requirements—ideal for patient and procedure rooms
- Planks: Two sizes for authentic visuals and layout flexibility



Fusion

Available in 16 colors: Sheet and XL Tiles
Designed by a European artist, this gray-toned collection offers depth and neutrality, working with both legacy finishes and fresh palettes—no customization needed.

Explore the Collection

The PURLINE 1500 Series brings together resilient performance and design flexibility across a thoughtfully curated range of formats and finishes. With durable, hygienic surfaces and a wide selection of styles and colors, it's the ideal choice for healthcare, education, hospitality, and commercial environments.

From realistic wood visuals to sophisticated textures and graphics, PURLINE supports a variety of design palettes. Many styles are available in both roll and plank/tile formats—offering design continuity and functional versatility across your entire space.

Available Formats



~ 7.87" × 47.24" (200 mm × 1200 mm)
Wood L Plank



~ 9.84" × 59.06" (250 mm × 1500 mm)
Wood XL Plank



~ 19.69" × 39.37" (500 mm × 1000 mm)
Stone XL | Graphic XL | Textile XL | Fusion XL Tile



~ 6.56' × 65.62' (2 m × 20 m)
Chip | Wood | Fusion Sheet

Note: Wood visuals on sheets do not require pattern matching and have a repeat length of up to 14.76 lin. ft. (4.5 m)

wineo

plank + tile



~ 7.87" × 47.24" (200 mm × 1200 mm)
Wood L Plank



~ 9.84" × 59.06" (250 mm × 1500 mm)
Wood XL Plank



~ 19.69" × 39.37" (500 mm × 1000 mm)
Stone XL | Graphic XL | Textile XL Tile

PURLINE® Wood L | Plank



Siena Oak Nature

PL15011WL



Newport Oak Natural *

PL15008WL



Canyon Oak Sand

PL15001WL



Newport Oak Brown *

PL15007WL

* also available in sheet



Newport Oak Natural

PURLINE® Wood L | Plank



Iceland Pine Light

PL15004WL



Ravenna Oak Beige

PL15009WL



Durban Oak Taupe *

PL15003WL



Ravenna Oak Brown

PL15010WL

* also available in sheet



Iceland Pine Light

PURLINE® Wood L | Plank



Lodge Oak Brown

PL15005WL



Lodge Oak Dark

PL15006WL



Durban Oak Brown *

PL15002WL



Aspen Oak Dark

PL15000WL

* also available in sheet



Durban Oak Brown | Steel Grey

PURLINE® Wood XL | Plank



Fjord Maple Beige PL15205WXL



Intensive Oak Nature PL15208WXL



Fine Oak Light * PL15203WXL



Fine Oak Nature PL15204WXL

* also available in sheet



Siena Oak Beige PL15219WXL



Siena Oak Honey * PL15221WXL



Mayfield Oak Nature * PL15213WXL



Intensive Oak Amber PL15206WXL

* also available in sheet

PURLINE® Wood XL | Plank



Canyon Oak Honey

PL15200WXL



Crafted Oak

PL15201WXL



Real Oak Nature

PL15217WXL



Melbourne Oak Natural *

PL15223WXL

* also available in sheet



Crafted Oak | Canyon Oak Honey



Photos: © Laura Thiesbrummel



PURLINE® Wood XL | Plank



Mayfield Oak Beige

PL15211WXL



Intensive Oak Taupe

PL15209WXL



Mayfield Oak Taupe *

PL15214WXL



Ravenna Oak Nature

PL15215WXL

* also available in sheet



Fine Oak Brown *

PL15202WXL



Intensive Oak Brown

PL15207WXL



Real Oak Taupe

PL15218WXL



Real Oak Amber

PL15216WXL

* also available in sheet

PURLINE® Wood XL | Plank



Mayfield Oak Brown PL15212WXL



Siena Oak Brown * PL15220WXL



Melbourne Oak Brown * PL15222WXL



Lugano Walnut Brown PL15210WXL

* also available in sheet



Lugao Walnut Brown | Metropolitan Marble Dark

PURLINE® Stone XL | Tile



Serene Marble Light PL15409SXL



Serene Marble Grey PL15412SXL



Serene Marble Nature PL15410SXL



Serene Marble Dark PL15411SXL



Modern Stone Grey PL15404SXL



Modern Stone Dark PL15403SXL

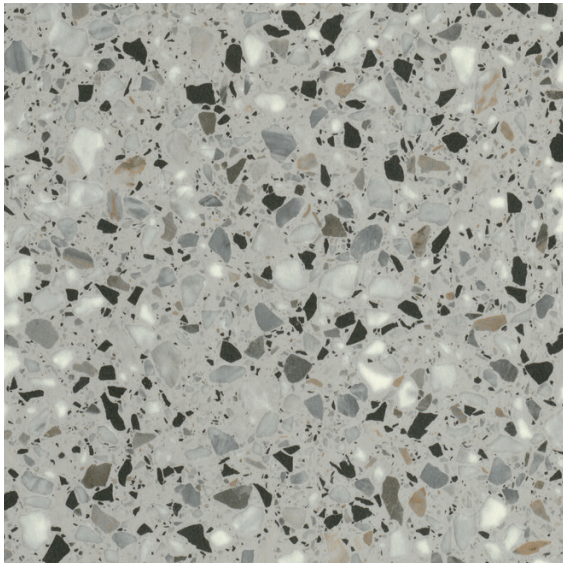


Serene Marble Light

PURLINE® Stone XL | Tile



Portland Concrete Light PL15408SXL



Venice Terrazzo Grey PL15413SXL



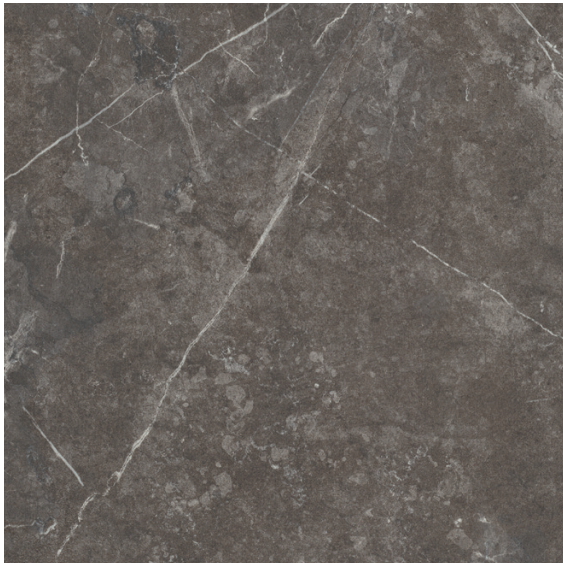
Loft Concrete Grey PL15401SXL



Loft Concrete Dark PL15400SXL



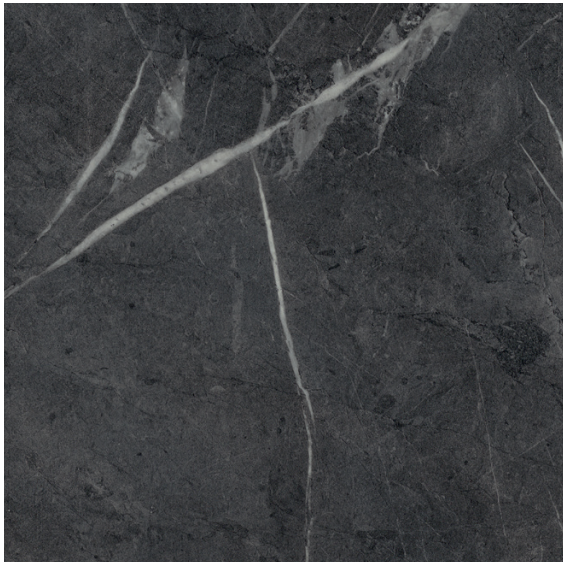
Portland Concrete Grey PL15407SXL



Olevano Marble Grey PL15405SXL



Portland Concrete Dark PL15406SXL



Metropolitan Marble Dark PL15402SXL

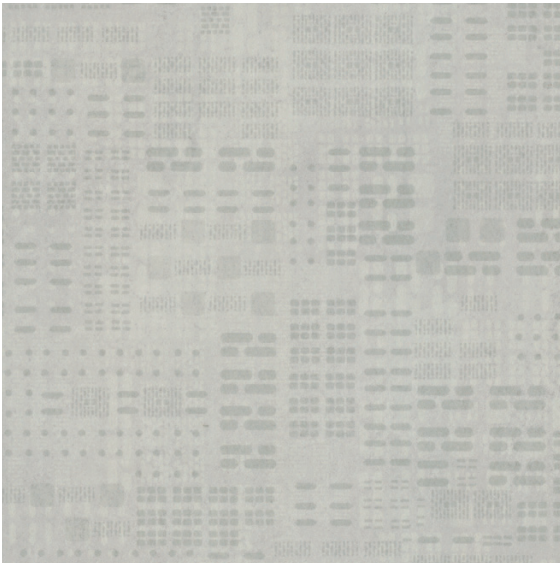


Portland Concrete Light

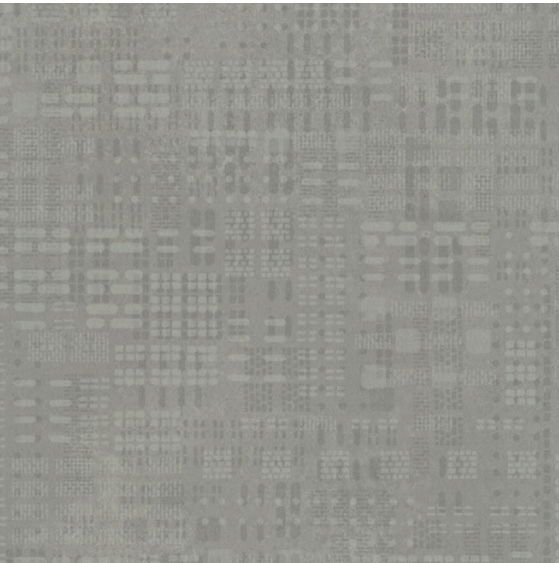
PURLINE® Graphic XL | Tile



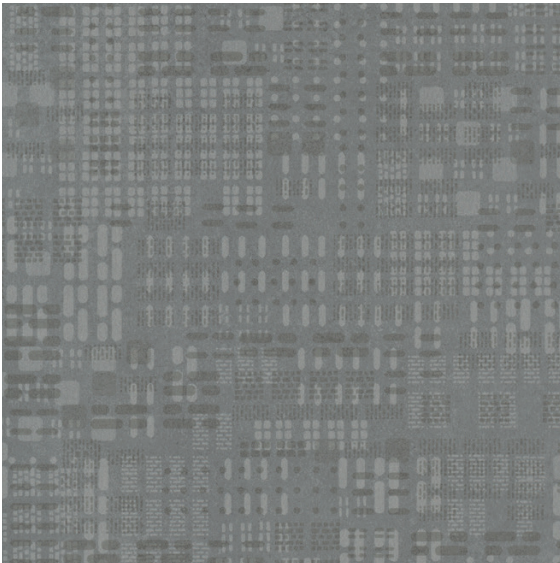
Fractal Ecru PL15601GXL



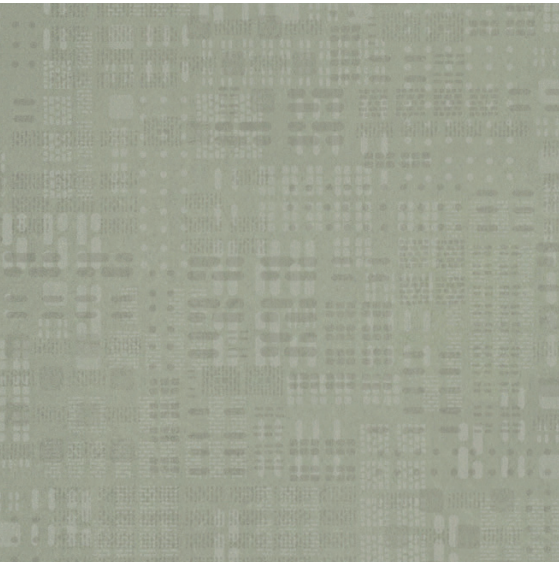
Fractal Light PL15603GXL



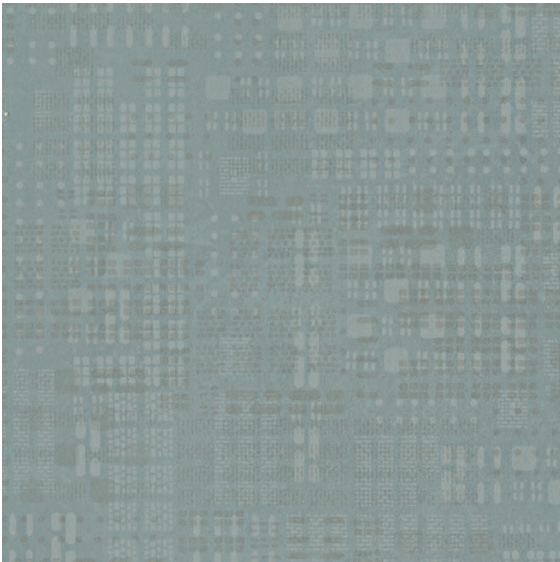
Fractal Grey PL15602GXL



Fractal Dark PL15600GXL



Fractal Opus PL15604GXL

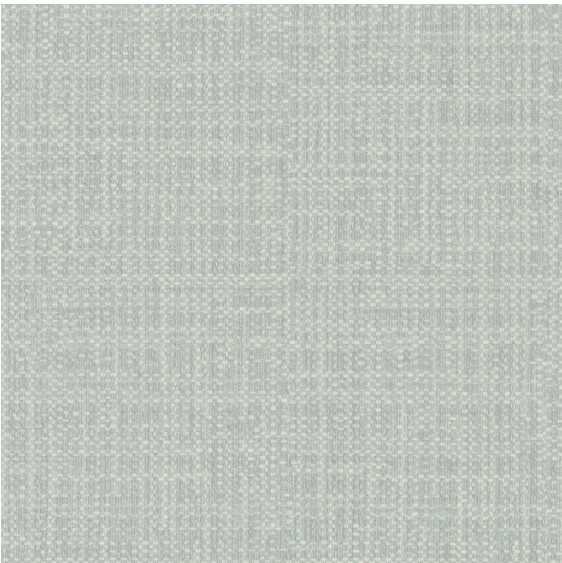


Fractal Wave PL15605GXL

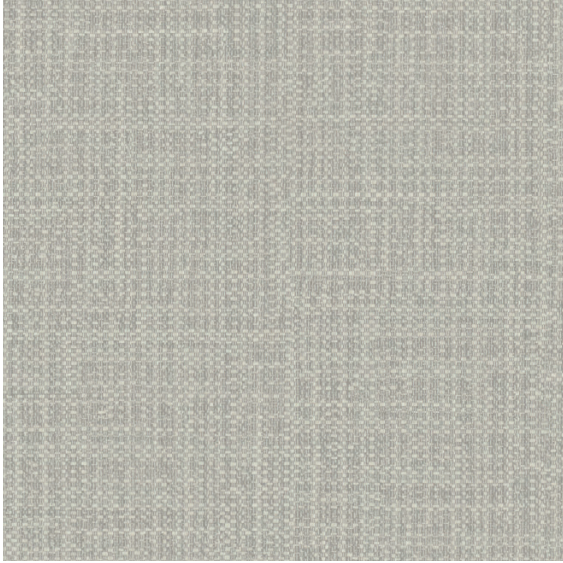


Fractal Light

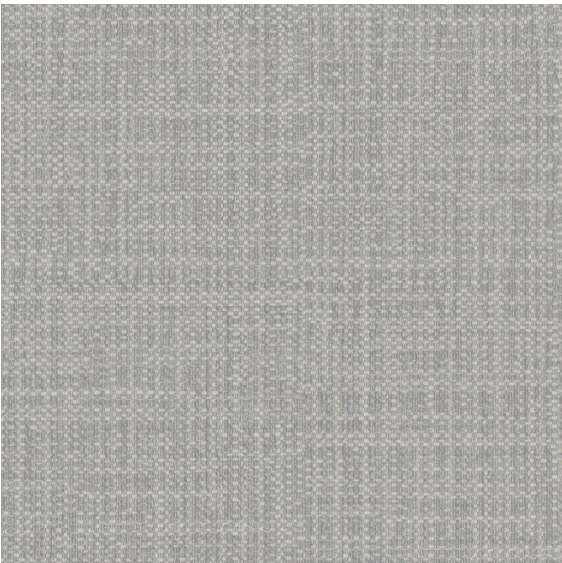
PURLINE® Textile XL | Tile



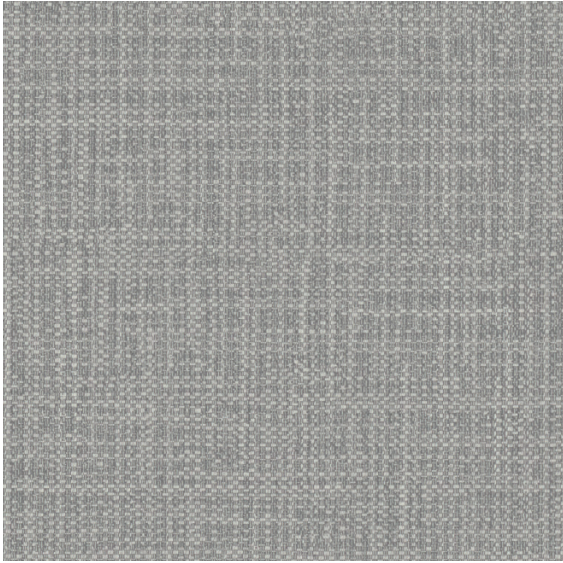
Oxford Oyster PL15502TXL



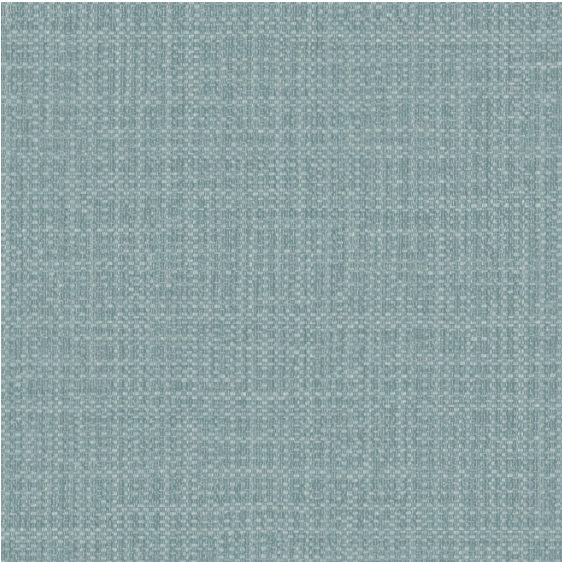
Oxford Flint PL15505TXL



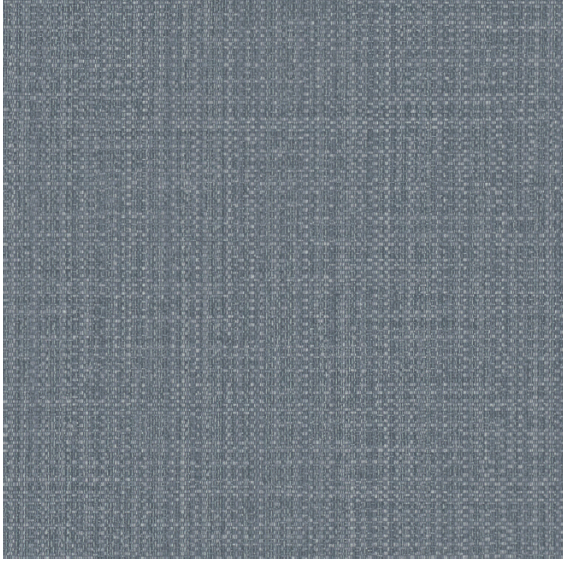
Oxford Steel PL15504TXL



Oxford Slate PL15503TXL



Oxford Ocean PL15501TXL

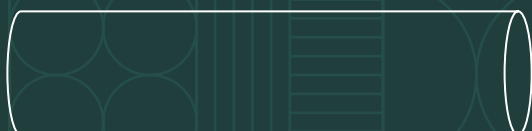


Oxford Denim PL15500TXL



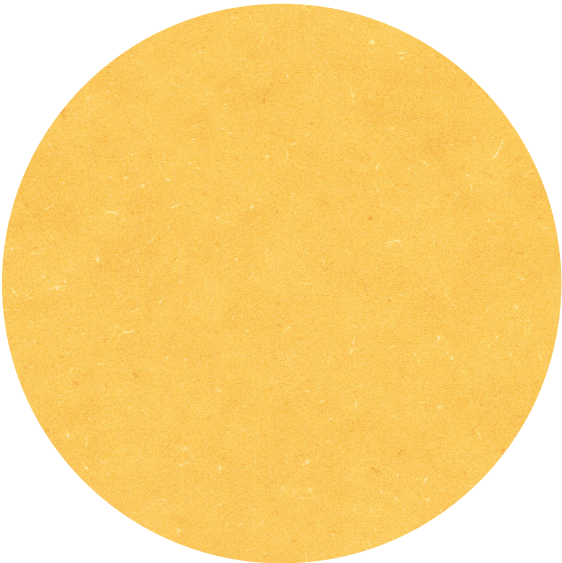
wineo

sheet

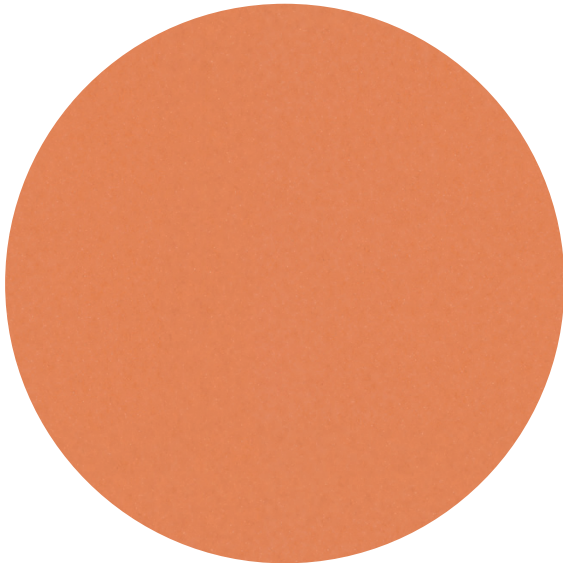


~ 6.56' × 65.62' (2 m × 20 m)
Chip | Wood Sheet

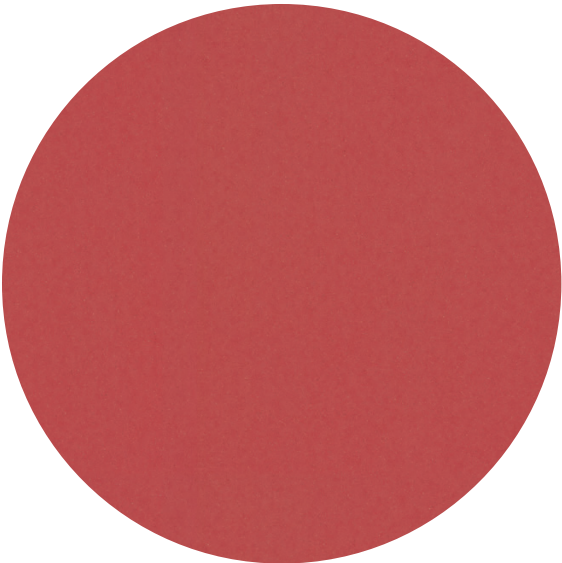
PURLINE® Chip | Sheet



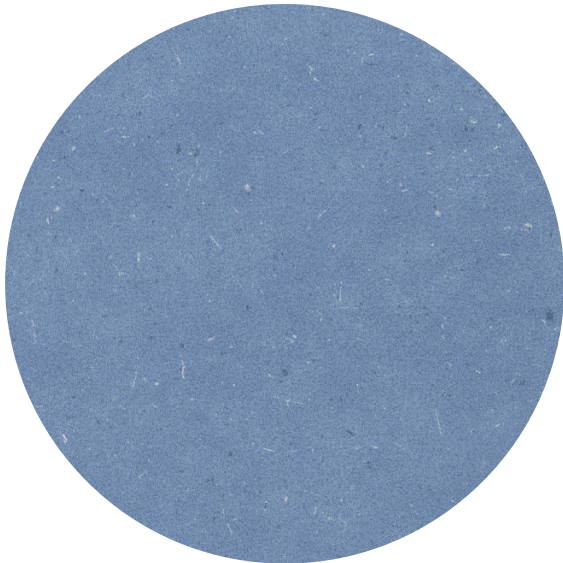
Honey Mustard
PLR128C



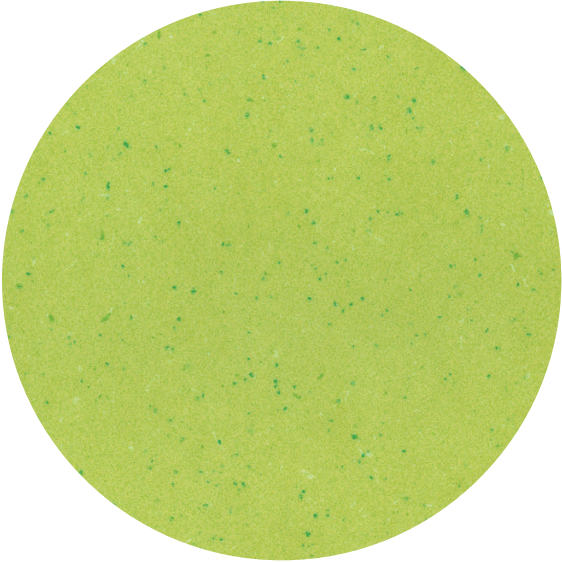
Tropical Orange
PLR386C



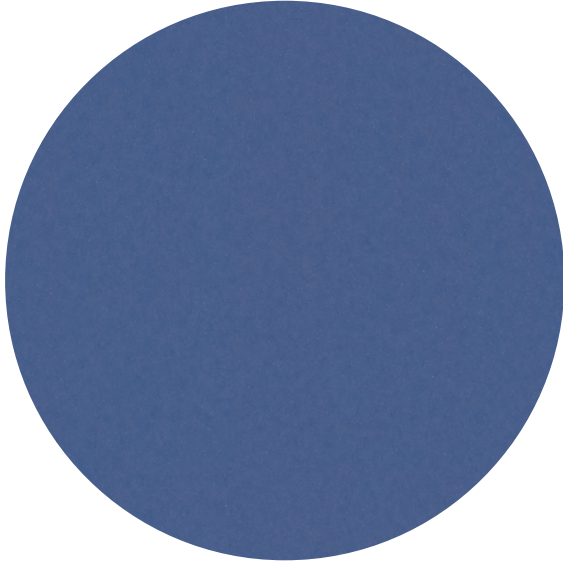
Cherry Red
PLR387C



Summer Sky
PLR014C



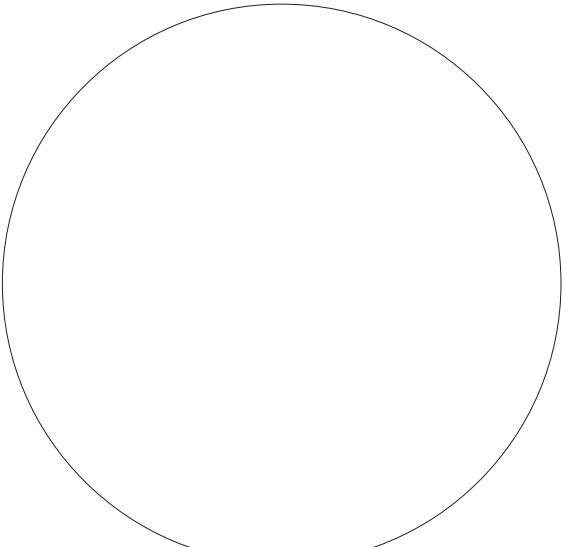
Apple Green
PLR185C



Royal Blue
PLR385C



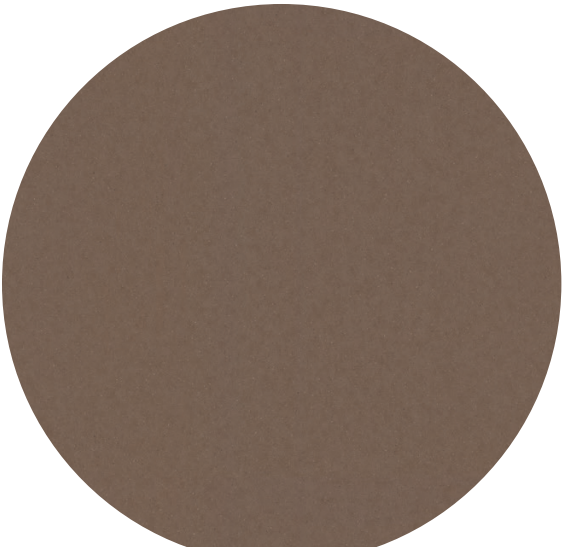
PURLINE® Chip | Sheet



Pure White
PLR025C



Cotton Beige
PLR383C



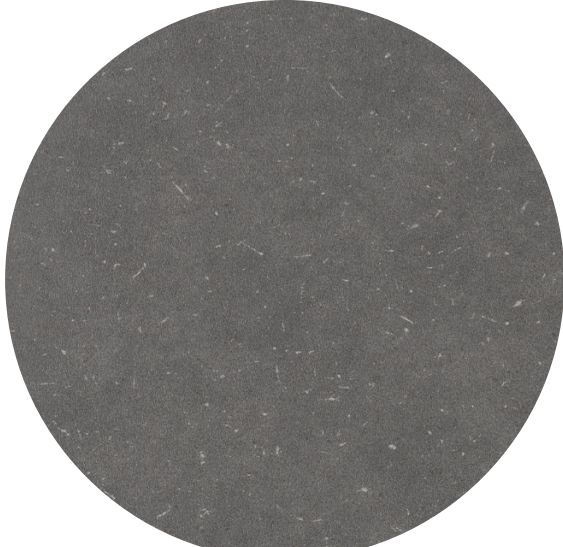
Chocolate Brown
PLR384C



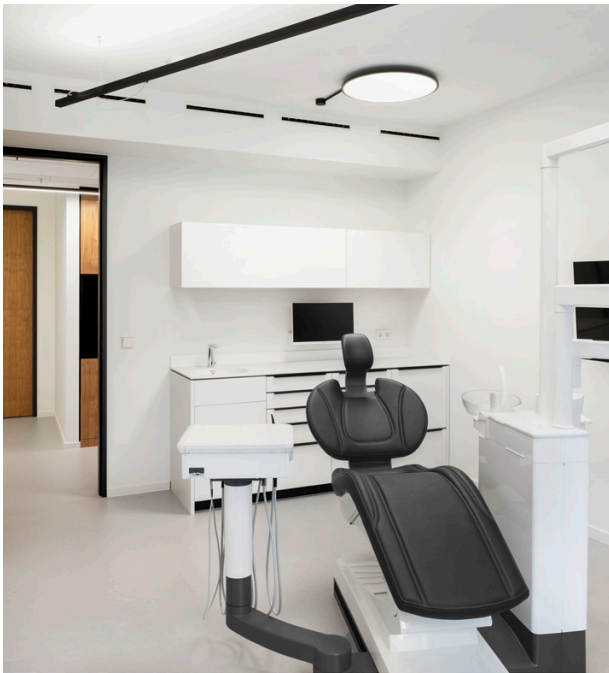
Light Grey
PLR021C



Silver Grey
PLR022C



Steel Grey
PLR023C



PURLINE® Chip | Sheet



Sunshine Yellow
PLR377C



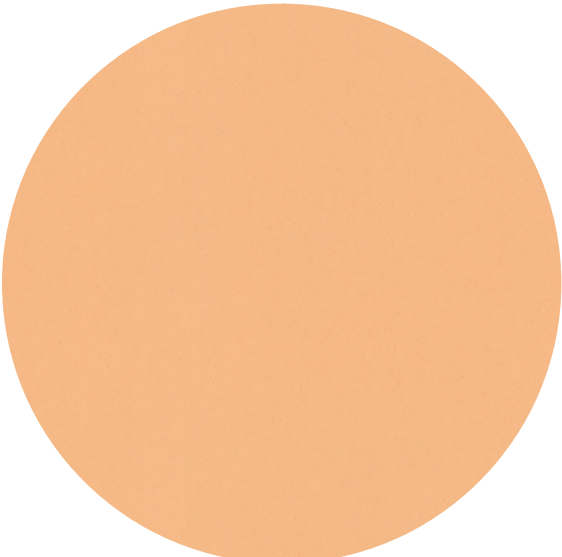
Jade Green
PLR373C



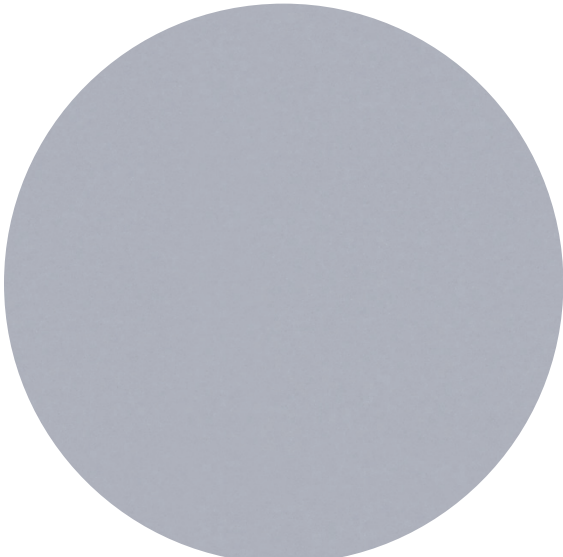
Almond Beige
PLR375C



Powder Rose
PLR374C



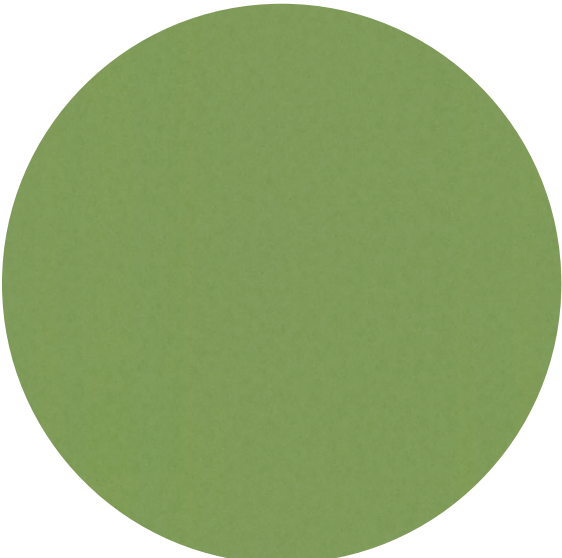
Springtime Orange
PLR378C



Fountain Blue
PLR376C



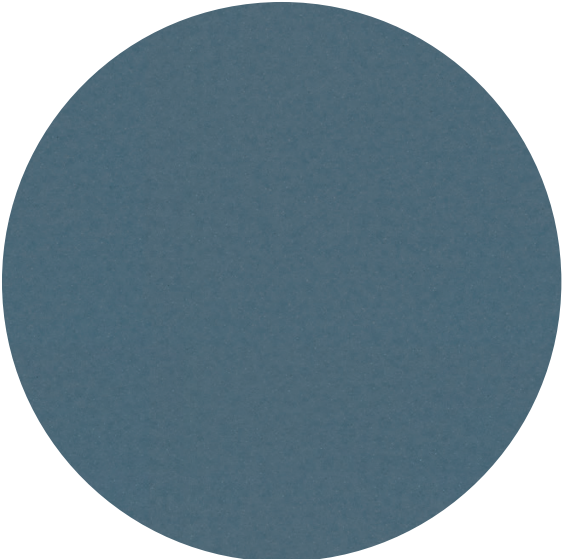
PURLINE® Chip | Sheet



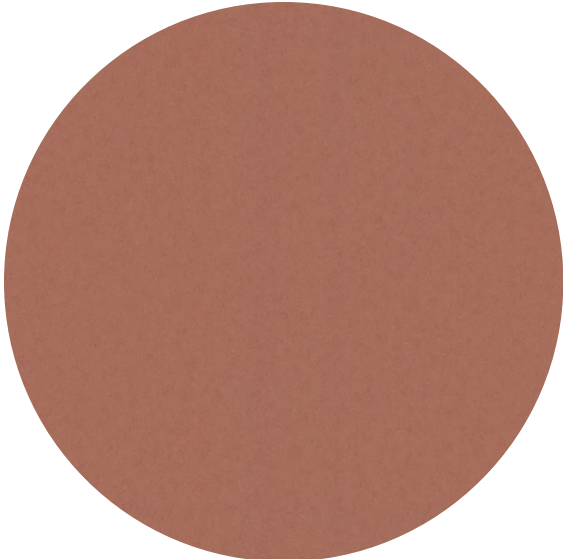
Aloe Green
PLR380C



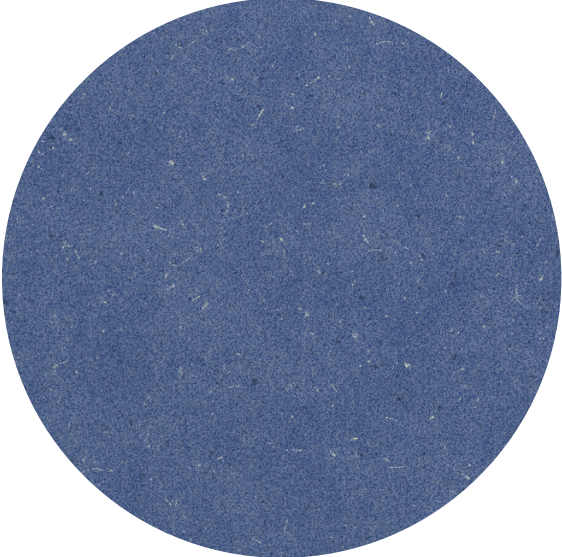
Wheat Brown
PLR379C



Ocean Blue
PLR381C



Rust Brown
PLR382C



Navi Blue
PLR129C



Melange
PLR003C





Fine Oak Light *
PLR15203W



Siena Oak Honey *
PLR15221W



Newport Oak Brown *
PLR394C



Siena Oak Brown *
PLR15220W



Mayfield Oak Nature *
PLR15213W



Newport Oak Natural *
PLR393C



Melbourne Oak Natural *
PLR395C



Melbourne Oak Brown *
PLR396C



Halifax Oak Natural
PLR389C



Mayfield Oak Taupe *
PLR15214W



Fine Oak Brown *
PLR15202W



Halifax Oak Brown
PLR390C

PURLINE® Wood | Sheet



Napa Walnut Rust
PLR388C



Durban Oak Taupe *
PLR391C



Napa Walnut Brown
PLR136C



Durban Oak Brown *
PLR392C

* also available in plank



wineo

fusion



~ 19.69" × 39.37" (500 mm × 1000 mm)
Fusion XL Tile



~ 6.56' × 65.62' (2 m × 20 m)
Fusion Sheet



pure.three



Photos: © Laura Thiesbrummel

PURLINE Fusion

Fusion is designed with architects and designers in mind, offering versatile grey tones to complement any design concept. With 16 unique designs in both light and dark, warm and cool shades, it seamlessly integrates into design palettes. Available in sheet (Fusion) and tile (Fusion XL) formats.



reddot award 2019
winner

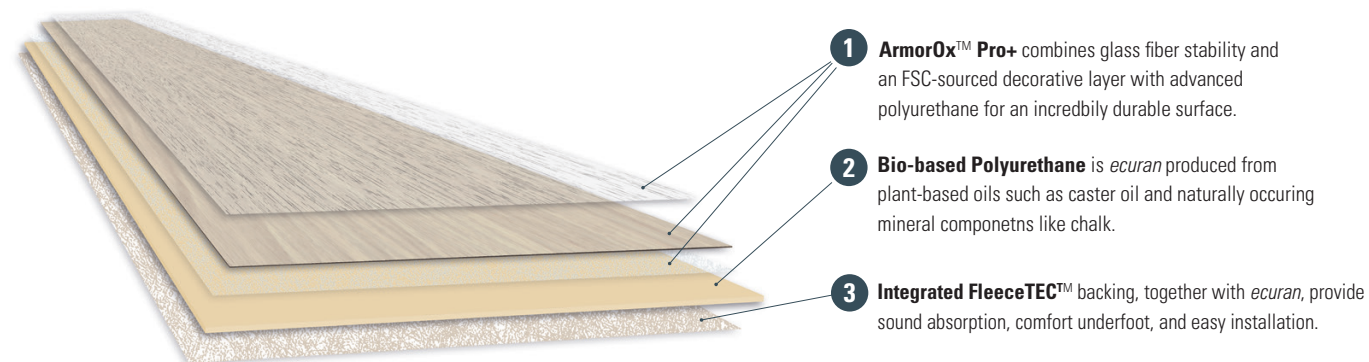
PURLINE® Fusion XL | Tile + Sheet

	cool	pure	warm	bright	
one	<div><div>cool.one</div><div>PLR107C Sheet PL107C Tile</div></div>	<div><div>pure.one</div><div>PLR111C Sheet PL111C Tile</div></div>	<div><div>warm.one</div><div>PLR119C Sheet PL119C Tile</div></div>	<div><div>bright.one</div><div>PLR115C Sheet PL115C Tile</div></div>	one
two	<div><div>cool.two</div><div>PLR108C Sheet PL108C Tile</div></div>	<div><div>pure.two</div><div>PLR112C Sheet PL112C Tile</div></div>	<div><div>warm.two</div><div>PLR120C Sheet PL120C Tile</div></div>	<div><div>bright.two</div><div>PLR116C Sheet PL116C Tile</div></div>	two
three	<div><div>cool.three</div><div>PLR109C Sheet PL109C Tile</div></div>	<div><div>pure.three</div><div>PLR113C Sheet PL113C Tile</div></div>	<div><div>warm.three</div><div>PLR121C Sheet PL121C Tile</div></div>	<div><div>bright.three</div><div>PLR117C Sheet PL117C Tile</div></div>	three
four	<div><div>cool.four</div><div>PLR110C Sheet PL110C Tile</div></div>	<div><div>pure.four</div><div>PLR114C Sheet PL114C Tile</div></div>	<div><div>warm.four</div><div>PLR122C Sheet PL122C Tile</div></div>	<div><div>bright.four</div><div>PLR118C Sheet PL118C Tile</div></div>	four

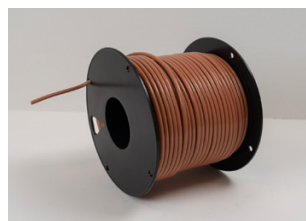
PURLINE®

Product Composition

PURLINE is crafted using the finest materials, following the *ecuran* recipe for a sustainable, high-performance product. Its robust composition ensures exceptional durability, dimensional stability, and long-lasting performance, making it ideal for high-traffic areas and demanding environments.



Purfix Accessories



Purfix Weld Rods

For Seamless, Hygienic Finishes
Art. No. by color

In hygiene-critical areas like healthcare, monolithic floor systems are essential. Purfix weld rods ensure a secure, impermeable seal—ideal for procedure rooms, labs, and other sensitive environments. Purfix weld rods are color-matched to all PURLINE rolled goods for a clean, cohesive look.

Format: 4 mm x 196.85' roll

Coverage: 1025 - 1145 ft² per roll



Purfix UltraCove

Multi-purpose, Pressure-Sensitive Tape-based Adhesive
Art. No. PTC900

- Our UltraCove pressure-sensitive, tape-based adhesive is designed for use with our biobased polyurethane resilient flooring for coving and transitions.
- Odorless, solvent, and VOC-free—can be used in occupied spaces
- Great for fast-track projects
- Unlimited working time
- Universal adhesive formulation—Plasticizer resistant

Format: ~6" x 164' (152 mm x 50 m) roll

Shelf Life: 24 months

Purfix Adhesives



Purfix UltraTape Adhesive

Efficient, No Moisture Test, Tape-Based Adhesive System
Art. No. PTS900

Our versatile, double-sided adhesive provides a strong, durable, and moisture-resistant bond, even under heavy rolling loads. Ideal for plank, tile, and especially rolled goods installations.

- Quick and Easy Installation: Supports foot traffic, heaving rolling loads, and heat welding immediately after installation.
- Consistent Coverage: Maximizes adhesive coverage while reducing installation errors associated with trowel-applied adhesives.
- Moisture Resistance: High resistance to alkaline moisture; no moisture or pH testing required. Use in conjunction with moisture-resistant levelling and patching compounds (as required) that have similar tolerances.
- Sustainable Features:
 - Free of hazardous substances: no adverse health impacts
 - Zero VOC emissions
 - Compliant with California South Coast Rule 1168
 - Release liner is 100% recyclable

Format: ~29.53" x 93.43' (75 cm x 30 m) roll

Coverage: 242 ft² per roll

Shelf Life: 24 months



Purfix UltraTech Adhesive

High-Performance, Moisture-Resistant Trowelable Adhesive
Art. No. UT500

Purfix UltraTech Adhesive is a superior-performance adhesive that is specifically formulated for installation of PURLINE bio-based polyurethane flooring and other approved flooring products. UltraTech performs well under rolling loads, resists indentation, and develops a strong, durable, moisture-resistant, and alkali-resistant bond. Its low volatile organic content makes it ideal for use in both residential and commercial applications. It may be used over properly prepared concrete or APA-grade plywood as well as over floors using radiant heat.

- Resistant to heavy rolling loads and shrinkage
- Low-VOC and low odor
- Moisture resistance up to 95% RH
- Easy to Trowel
- Sustainable Features:
 - Solvent-free, water-based
 - Certified low-emitting and compliant with California South Coast Rule 1168
 - No harmful ingredients; safe for human health
 - Packaging is 100% recyclable
 - VOC: <50 g/L (as calculated per SCAQMD Rule 1168)

Format: Available in 4-gallon pails (48 pails per pallet).

Trowel Recommendations: 1/16" x 1/16" x 1/16" Flat V-Notch

Coverage: 125 - 145 ft² per gallon

Shelf Life: Shelf life is one year from date of manufacturing in unopened, original packaging when stored at temperatures between 65°F (18°C) and 80°F (26°C).

Proven Green. Certified Clean.

Environmental Certifications



Cradle to Cradle®

Cradle to Cradle® Silver confirms the utilization of environmentally safe, healthy and reusable materials (technical reutilization) and the use of solar power or other regenerative sources of energy, together with responsible water stewardship and strategies adopted by a company to embrace its responsibility to society.



Blue Angel (Blauer Engel)

The “Blue Angel” guarantees that our products and services fulfill high requirements placed on environmental, health and usage properties. Criteria are compiled for each product group, which are checked every three to four years by the Federal Environment Agency.



eco-INSTITUT-label

The eco-INSTITUT label confirms that a product complies with certain health and environmental standards. The label signals to consumers that the certified product is environmentally friendly and has been tested for harmful substances.



Austrian eco-label (Österreichisches Umweltzeichen)

The “Österreichisches Umweltzeichen” (Austrian eco-label) assesses products from quality, health-related and ecological standpoints. Products can only be certified if they are harmless to health. The fulfillment of the criteria is checked every four years.



Greenguard

The Greenguard certificate ensures that a product fulfills the strictest and most comprehensive requirements for emissions of Volatile Organic Compounds (VOCs) into the air.



Declare

Voluntary self-disclosure program aimed at transforming the building materials industry into a healthier and more environmentally friendly products through transparency of ingredients. Participating in Declare requires manufacturers to disclose all product ingredients.



M1

The M1 seal in the Finnish market labels our products as environmentally friendly, health-friendly and consumer-friendly. The focus is on emissions of Volatile Organic Compounds (VOCs).



A+

The A+ seal identifies our products as ecological, healthy and user-friendly in the french market.



Environmental Certifications



TFI-TÜV PROFICERT PREMIUM for Multi-Layer

The TFI (Textiles & Flooring Institute GmbH) and the TÜV Hessen evaluate products based on qualitative, health and ecological principals. Fundamentally, only products that are considered harmless to health can be certified.



KfB

Award from the competence centre for dynamic processes at Bielefeld University of Applied Sciences (FH). The flooring product PURLINE has passed the dynamic standard examination of rolling behavior in accordance with the KfB roadmap.



FloorScore®

The SCS Global Services' FloorScore® program certifies hard surface flooring and accessories compliance with California Section 01350 indoor air emissions of Volatile Organic Compounds (VOCs).



Building Certification/Product Declaration



BREEAM

The British sustainability certificate for development projects is used in 15 other countries.



DGNB

Certification system of the German Sustainable Building Council and the Federal Ministry of Transport, Building and Urban Affairs. Evaluates a building's quality over its entire life cycle and is internationally applicable.



LEED

Rating system of the US Green Building Council. It considers the regional and local criteria according to global standards. The use of building materials with cradle to cradle proof is evaluated with bonus points.



WELL

The WELL Building Standard focuses on the health and well-being of the people within in the building.



Mindful Materials

The Mindful Materials aggregator discloses sustainability information to promote product transparency and optimization.



HPDC

The Health Product Declaration fully discloses potential chemicals of concern contained in products.



EPD

The environmental product declaration is a third-party certification document that transparently reports the environmental performance or impact of a product.



Technical Characteristics

Technical Characteristics **65**



wineo

Windmoeller Inc.
info@windmoellerinc.com
wineoflooring.com

